

NOTE:
DO NOT USE HOUSEWRAP (E.G., TYVEK OR TYVAR).
USE PEEL-&-STICK OR LIQUID APPLIED MEMBRANE, OR
ZIP SYSTEM™ PER MFR'S RECOMMENDATIONS.

NOTES:

1. THE COPYRIGHT OF THIS DRAWING IS VESTED IN GS RESEARCH LLC AND IT MAY NOT BE REPRODUCED IN WHOLE OR PART OR USED FOR THE MANUFACTURE OF ANY ARTICLE WITHOUT THE EXPRESS PERMISSION OF THE COPYRIGHT HOLDERS.
2. DOUBLE GLAZED UNIT AS BASIS FOR MULTI-GLAZED UNITS.

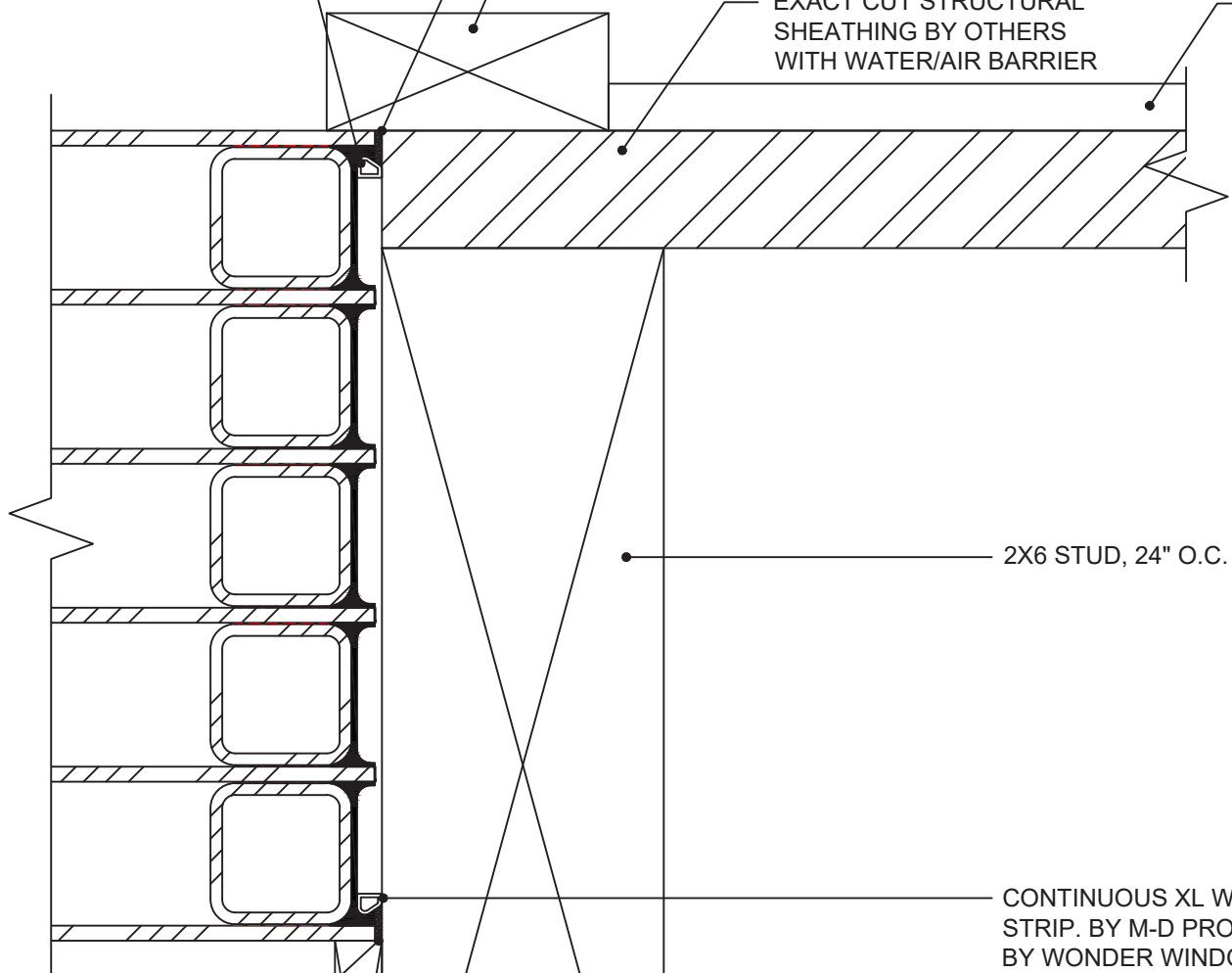
CONTINUOUS BEAD
GORILLA CLEAR MAX
STRENGTH CONSTRUCTION
ADHESIVE BY OTHERS

CONTINUOUS XL WEATHER STRIP.
BY M-D PROVIDED BY WONDER
WINDOW

5/8"X1-1/2"
TRIM

EXACT CUT STRUCTURAL
SHEATHING BY OTHERS
WITH WATER/AIR BARRIER

SIDING
PANEL



2X6 STUD, 24" O.C.

CONTINUOUS XL WEATHER
STRIP. BY M-D PROVIDED
BY WONDER WINDOW

CONTINUOUS BEAD
GORILLA CLEAR
MAX STRENGTH
CONSTRUCTION
ADHESIVE BY OTHERS

1/4"X1-1/2" PVC
OR WOOD TRIM
ADHESIVE APPLIED

5/8" D.W.

1/4"X1-1/2" PVC
OR WOOD TRIM
ADHESIVE APPLIED

TITLE: 2248 R7 TRIM DETAIL
(OPTION 1)

SCALE: 1:1